



Location Advantages

- Covered by 88 Top IT Companies
- International Schools
- Well Known Hospitals
- Entertainment Hub

Siddartha
srinilaya

EXECUTIVE APARTMENTS
off HOSUR ROAD Electronic City Phase 2
ANANTHNAGAR

*Divine Homes...
Happy Life...*



On Going Projects

Siddartha Srikara

Siddartha Sapphire



Our Completed Projects

Siddartha Supreme

Siddartha Serenity



A PROJECT OF



990, Gomatha Building, Ground Floor,
20th Cross, 5th Main, HSR 7th Sector Bangalore - 560 102,
Email : sales.siddarthabuilders@gmail.com
www.siddarthabuilders.com

CALL 080-25727480 99860 09682 9449080681





The Location is in the vicinity of the city's burgeoning business and entertainment hub. Offering you the best of Bangalore, as well as the space and serenity of a private paradise. Best of all, you won't have to wait too long to take possession of your Siddartha Srinilaya.

Siddartha Srinilaya is located in a place, which is fast emerging center of commerce and business. Close to all major landmarks, Siddartha Srinilaya is at a stone's throw distance from all the locales of IT hub, Sports Complex and Malls. It is well connected to major schools, colleges, medical facilities, entertainment hub and chain of hotels. Meeting your daily necessities will be hassle free in terms of distance and availability, so that life in Siddartha Srinilaya will be a lifetime experience.



AMENITIES

- Lift of 6 passengers capacity
- Security room
- Generator for Lift, pump & Common areas
- Rain water harvesting with soak wells
- 24 hours Bore water
- Provision for solar water heaters
- Provision for Cable TV & Telephone



PAYMENT SCHEDULE

BOOKING ADVANCE Rs. 1,00,000.00

| | | |
|------------|--|-----|
| PHASE : 1 | With In 15 Days At The Time of Agreement of sale | 20% |
| PHASE : 2 | Completion of footings & foundation | 10% |
| PHASE : 3 | Completion of 1st slab | 10% |
| PHASE : 4 | Completion of 2nd slab | 10% |
| PHASE : 5 | Completion of 3rd slab | 10% |
| PHASE : 6 | Completion of 4nd slab | 10% |
| PHASE : 7 | Completion of 5th slab | 10% |
| PHASE : 8 | Completion of Brickwork | 10% |
| PHASE : 9 | Completion of Plastering, Flooring, Electrical & Plumbing Work | 5% |
| PHASE : 10 | Handling over the flat/registration (whichever is earlier) | 5% |

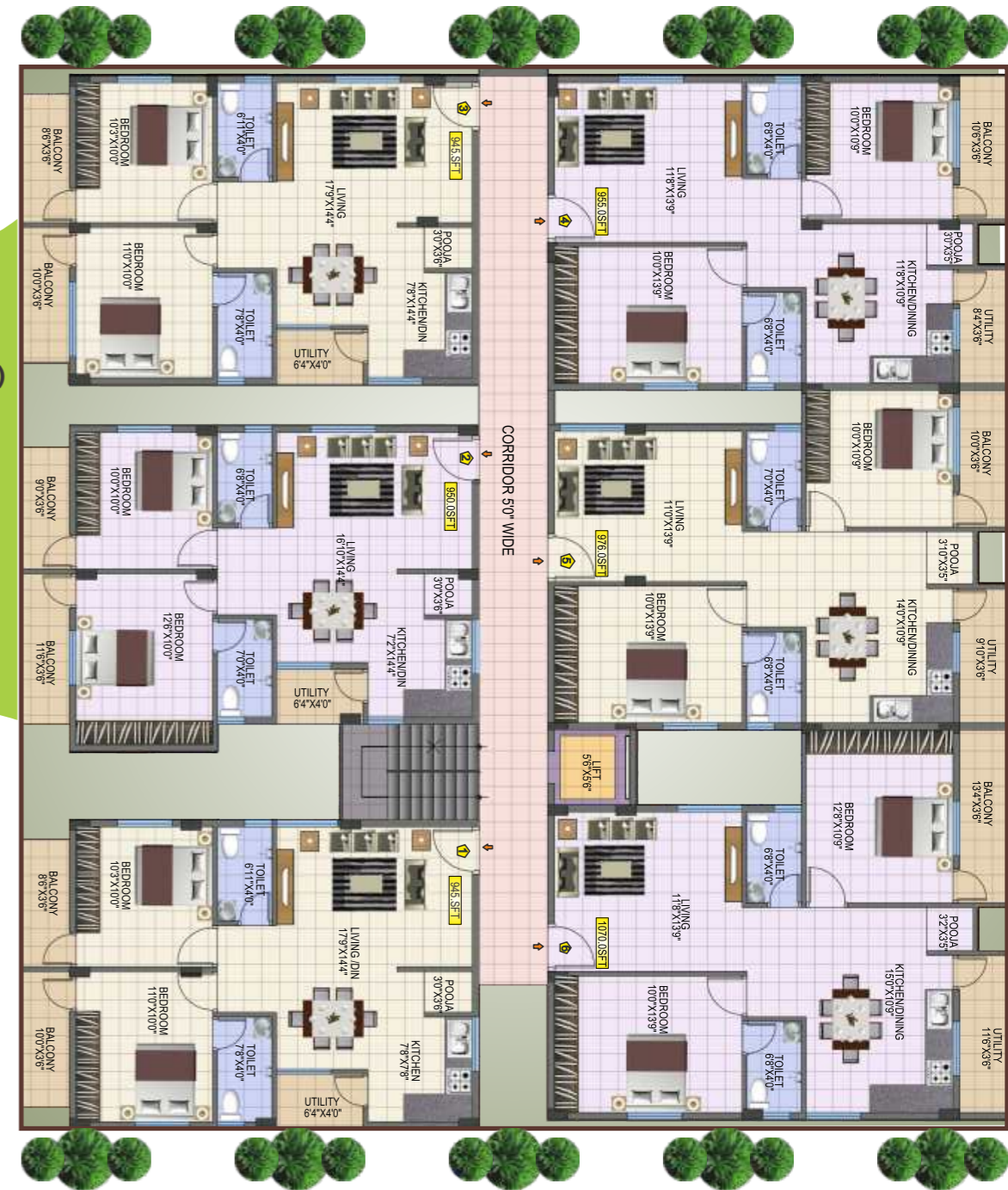


TYPICAL FLOOR PLAN

siddartha
srinilaya
EXECUTIVE APARTMENTS

AREA STATEMENT

| Flat No. | Area (sqft) |
|----------|-------------|
| 1 | 945 |
| 2 | 950 |
| 3 | 945 |
| 4 | 955 |
| 5 | 976 |
| 6 | 1070 |



SPECIFICATIONS

- Structure | R.C.C. Framed structures with necessary footings and Beams
- Walls | External walls with 6" thick solid concrete block, Internal walls with 4" thick solid concrete block.
- Plastering Finishing | External : Sponge finish with two coat ACE outlook Paints Internal : Smooth putty finish with OBD Paints.
- Doors : Main Door | Teak wood frame with OST shutters
- Other Doors | Sal wood frame with flushed shutters
- Windows | Powder coated Aluminium Windows with M. S. Grills and two track sliding shutters with Glass paneling.
- Toilets | Standard make sanitary ware 70" height ceramic/ glazed tile dado. Quality C.P. fittings of standard make.
- Water Supply | Over head & under ground storage tank for water supply from borewell.
- Kitchen | Granite Platform with stainless steel sink. Glazed tile dado upto 2ft.
- Flooring | Vitrified tiles in living & Dining Superior Quality Ceramic tile / Semi Vitrified flooring for the rest.
- Electrification | Modular switch board with ISI switches, sockets & Standard make cables.
- TV & Telephone points in living and Master bedroom
- Common Areas | Marble/Granite flooring in lobbies Staircase & Corridor.
- Provision for Geycer, Exhaust fan & Water Purifiers.

